

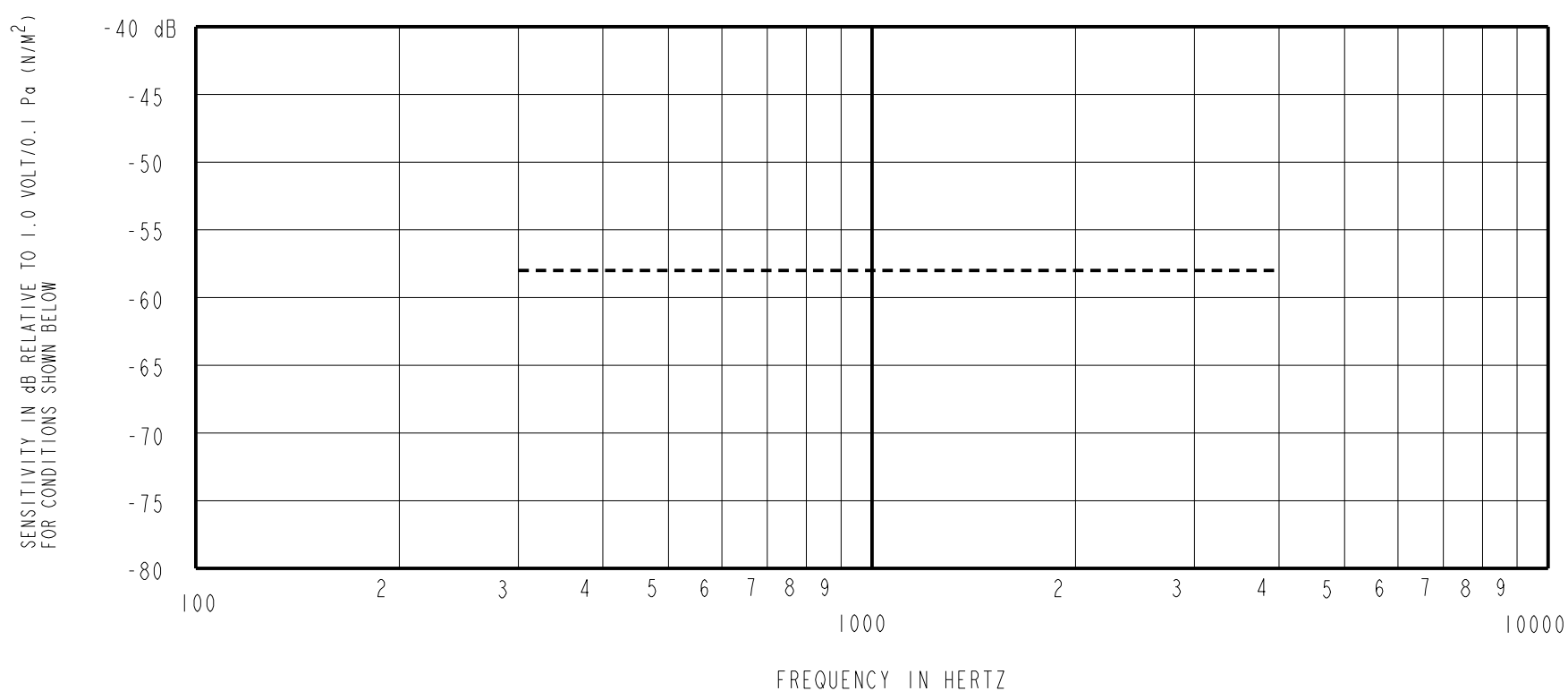
WIRE COLOR			WEIGHT GRAMS
+ ve	OUTPUT	- ve	
CORE		SCREEN	13.2

DIMENSIONS IN MILLIMETERS [INCHES]

Revision	C.O. #	Implementation Date	RELEASE LEVEL	REVISION
B	C40101871	9-16-15	Active	B
A	C40101326	11-12-13		

SCALE:	1:1		DR. BY	DATE
DO NOT SCALE DRAWING			LW	09-30-13
TITLE:	BOOM MICROPHONE	FB-DW-32198-000	CK. BY	DATE
OUTLINE DRAWING		SHT 1.1	GJP	11-15-13
			APP. BY	DATE
			GJP	11-15-13

**KNOWLES**



NOTES:

1. MICROPHONE TO BE FUNCTIONAL WITH 10 VDC SUPPLY.
2. SENSITIVITY VALUES INDICATED ON THIS SPECIFICATION ARE VALID AT 50% HUMIDITY.

3. SENSITIVITY

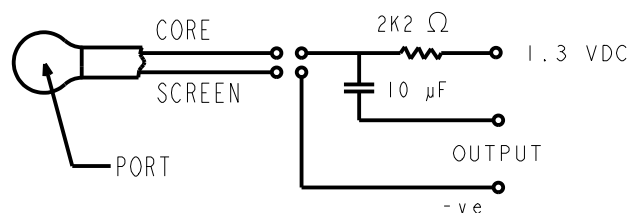
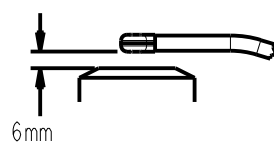
FREQUENCY	MIN	NOM	MAX
300	---	-60.0	---
1000	-64.0	-60.0	-56.0
4000	---	-60.0	---

DEVICE CONFORMITY  
RANGE OF DEVIATION FROM 1KHz

-4.0	+4.0
-0.0	+0.0
-4.0	+4.0

4. TEST CONDITIONS:  
HEAD OF BOOM EXPOSED TO 74 dB SPL SWEPT SOUND FIELD AT 6mm FROM VOICE APERTURE.  
ARTIFICIAL VOICE: B & K 4227 MOUTH SIMULATOR.

5. FOR MICROPHONE CAPSULE SPEC. SEE NR-30572-000 SHEET 2.1



LEAD IDENTIFICATION  
& TEST CIRCUIT

Revision	C.O. #	Implementation Date	RELEASE LEVEL	REVISION
B	C40101871	9-16-15	Active	B
A	C40101326	11-12-13		

**KNOWLES**

WHEN TEST LIMITS ARE USED TO ESTABLISH INCOMING INSPECTION ACCEPTANCE/REJECTION CRITERIA, CORRELATION OF TEST EQUIPMENT WITH KNOWLES IS ALSO REQUIRED FOR ELIMINATION OF EQUIPMENT AND TEST METHOD VARIATION

TITLE: **BOOM MICROPHONE** **FB-DW-32198-000**  
PERFORMANCE SPECIFICATION **2.1**

DR. BY	DATE
LW	09-30-13
CK. BY	DATE
GJP	11-15-13
APP. BY	DATE
GJP	11-15-13